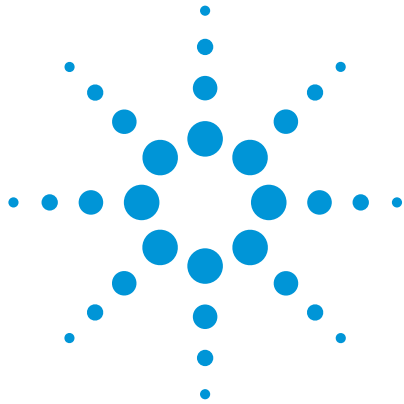


Agilent 34980A Multifunction Switch/Measure Unit Summary



Compact, economical one-box solution for medium to high-density switch/measure applications in design verification, automated test and data acquisition

34980A Multifunction Switch/Measure Unit

The Agilent 34980A Multifunction Switch/Measure unit is designed for R&D and manufacturing test engineers who are working in design verification, automated test or data acquisition and are either looking to upgrade their existing systems or are in need of a new, cost-effective alternative.

The 34980A is an eight-slot mainframe that offers 19 plug-in modules and an optional 6 1/2 digit DMM. It is easy to integrate with standard LAN, USB and GPIB connectivity to PC, and is priced up to 40% less than comparable switching solutions.

Broad offering of modules

With 19 different plug-in modules in low frequency, RF and microwave switching to 20GHz, digital I/O, D/A converters, and counter/totalizer functionality, the 34980A has the core switch/measure functionality needed for most automated test and data acquisition applications.

The 34980A can accommodate up to 560 2-wire MUX or 1024 2-wire matrix cross-points in one mainframe.

Internal DMM option

The 6 1/2 digit DMM is mounted inside the mainframe without consuming any of the eight available slots. It has flexibility to measure 11 types of inputs.

- Temperature and thermocouples, RTD's or thermistors
- DC and AC voltage
- 2- and 4-wire resistance
- Frequency and period
- DC and AC current

Ease of integration

With the 34980A, make quick and easy system connections by choosing between standard 50 or 78-pin DSub cables, quick disconnect terminal blocks or mass interconnect connections. The 34980A offers built-in LAN, USB 2.0 and GPIB interfaces for simple connection to your PC, as well as, the most common programming environments with SCPI, IVI or LabView software drivers.

Built-in graphical web interface

Remote access and control of the instruments via a Java-enabled browser.

- Set up, troubleshoot and maintain your system remotely
- View and modify instrument setup
- Open, close or monitor switches
- Setup and initiate scans
- Send SCPI commands
- Define and execute switch sequences
- View error queue
- Get status reports on relay counts, firmware revisions and more

Low cost

Applications vary, and the 34980A is designed to meet specific testing needs by offering a flexible, tailorable solution for signal switching, battery test, monitoring, product characterization, thermal profiling, environmental test, and quality control at a price that is up to 40% less than comparable modular solutions.



Agilent Technologies

34980A Modules at a glance

The 34980A mainframe holds up to eight plug-in modules. Mix and match them to create a custom system to meet your switching and system control needs. You can easily add or replace modules as your requirements change.

Low Frequency Modules

Multiplexers		Max Volts, Max Current, Scan Ch/Sec		
34921A	40 Channel Armature	+/- 300V	1A	100
34922A	70 Channel Armature	+/- 300V	1A	100
34923A	40/80 Channel Reed	+/- 150V	0.5A	500
34924A	70 Channel Reed	+/- 150V	0.5A	500
34925A	40/80 Channel Optically Isolated FET Multiplexer	+/- 80V	0.5A	1000
Matrix Switches				
34931A	Dual 4x8 Armature	+/- 300V	1A	100
34932A	Dual 4x16 Armature	+/- 300V	1A	100
34933A	Dual/Quad 4x8 Reed	+/- 150V	0.5A	500
GP/Actuator Switches				
34937A	28 Channel Form C 4 Channel Form A	300V 250AC	1A 5A	N/A N/A
34938A	20 Channel 5 Amp Form A	250AC	5A	N/A

RF and Microwave Modules

RF Switching		Insertion Loss, Freq Range, VSWR
34941A	Quad 1x4 50 Ohm	0.6dB, 3 GHz, <1.25
34942A	Quad 1x4 75 Ohm	Contact Factory
Microwave Switching		
34945A	Microwave Switch/Attenuator Driver	Drive up to 64 external switch coils; 32 SPDT switches, 8 multiport switches, 8 attenuators, or custom combination
34946A	Dual 1x2 SPDT Terminated	<0.42dB to <0.69dB, 4 GHz or 20 GHz, <1.15 to <1.30
34947A	Triple 1x2 SPDT Unterminated	<0.42dB to <0.69dB, 4 GHz or 20 GHz, <1.15 to <1.30

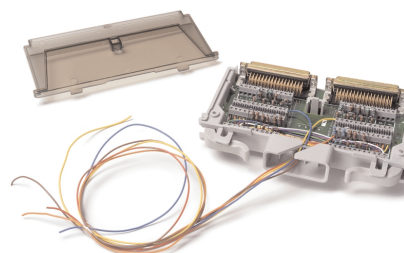
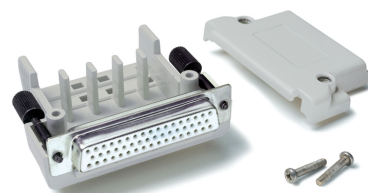
System Measurement and Control Modules

		Information
34950A	64 Bit DIO with Memory and Counter	Eight 8-bit digital I/O channels, up to 5V thresholds, 7 handshaking protocols, pattern memory, two 10 MHz frequency counter/totalizers, 10 MHz programmable clock output
34951A	4 Channel Isolated D/A Converter with Waveform Memory	Output DC V up to +/-16V or DC current up to +/-20 mA, Output wave forms w/200 kHz update rate and 16 bit resolution
34952A	Multifunction Module with 32 Bit DIO, 2 Channel D/A and Totalizer	Four 8-bit digital I/O channels, 2 +/- 12V analog outputs, 100 kHz gated totalizer
34959A	Breadboard	Access to +12V and +5V supplies, 16 GPIO ports, 32 relay drive lines for custom designs

www.agilent.com

Get the latest information on this product and applications at:

www.agilent.com/find/34980A



Product specifications and descriptions in this document are subject to change without notice.

Microsoft, Windows, and Windows NT are U.S. registered trademarks of Microsoft Corp.

© Agilent Technologies, Inc. 2004
Printed in USA, November 1, 2004
5989-1874EN



Agilent Technologies